



Overview

2017/2018

SingHealth Group overall key figures & statistics

Manpower

| Medical | Dental | Nursing | Allied Health | Others | TOTAL |
|---------|--------|---------|---------------|--------|--------|
| 3,524 | 176 | 10,393 | 5,455 | 9,010 | 28,558 |


Year ended 31 Mar

Key Figures

2018

| Size | |
|--|-----------|
| Beds | 4,038 |
| Workload per annum | |
| Bed Occupancy Rate | 81.6% |
| Inpatients | 185,096 |
| Total Patient Days | 890,330 |
| Average Length of Stay (days) | 4.8 |
| Day Surgeries | 136,392 |
| Inpatient Surgeries | 82,180 |
| Specialist Outpatient Clinic Attendances | 2,121,710 |
| Accident & Emergency Attendances | 343,144 |
| Dental Attendances | 247,690 |
| Dental Procedures | 319,766 |
| Polyclinic Attendances | 1,819,465 |

Note: 2018 figures include CGH's figures from date of integration (1 Jan 2018)



31 Third Hospital Avenue,
 #03-03 Bowyer Block C, Singapore 168753
 Tel: 6225 0488 www.singhealth.com.sg

| Medical | Dental | Nursing | Allied Health | Others | TOTAL |
|---------|--------|---------|---------------|--------|-------|
| 0 | 0 | 13 | 124 | 888 | 1,025 |

| | |
|---|---|
|  DukeNUS Medical School | 8 College Road, Singapore 169857 Tel: 6516 7666 www.duke-nus.edu.sg |
|---|---|

| | |
|-------|---|
| 277 | Doctor of Medicine (MD) Students Including 18 students currently enrolled in Integrated Biology and Medicine (IBM) PhD programme, and 6 IBM PhD graduates |
| 59 | Integrated Biology and Medicine (IBM) PhD students Including 18 MD Students |
| 3 | Integrated Biostatistics and Bioinformatics (IBB) PhD students |
| 1,444 | Faculty Including faculty in Research, Education and the Office of Academic and Clinical Development |

| | |
|---|---|
|  Singapore General Hospital | Outram Road, Singapore 169608 Tel: 6222 3332 www.sgh.com.sg |
|---|---|

| Medical | Dental | Nursing | Allied Health | Others | TOTAL |
|--|--------|---------|---------------|--------|---------|
| 1,187 | 0 | 3,914 | 1,777 | 2,444 | 9,322 |
| Size | | | | | |
| Beds | | | | | 1,748 |
| Workload per annum | | | | | |
| Bed Occupancy Rate | | | | | 86.1% |
| Inpatients | | | | | 81,495 |
| Total Patient Days | | | | | 495,809 |
| Average Length of Stay (days) | | | | | 6.1 |
| Day Surgeries | | | | | 50,715 |
| Inpatient Surgeries | | | | | 47,583 |
| Specialist Outpatient Clinic Attendances | | | | | 748,991 |
| Accident & Emergency Attendances | | | | | 128,047 |

| | |
|---|--|
|  Changi General Hospital | 2 Simei Street 3, Singapore 529889 Tel: 6788 8833 www.cgh.com.sg |
|---|--|

| Medical | Dental | Nursing | Allied Health | Others | TOTAL |
|--|--------|---------|---------------|--------|---------|
| 739 | 0 | 2,311 | 993 | 1,645 | 5,688 |
| Size | | | | | |
| Beds | | | | | 1,066 |
| Workload per annum | | | | | |
| Bed Occupancy Rate | | | | | 85.7% |
| Inpatients | | | | | 51,110 |
| Total Patient Days | | | | | 319,907 |
| Average Length of Stay (days) | | | | | 6.3 |
| Day Surgeries | | | | | 32,740 |
| Inpatient Surgeries | | | | | 25,321 |
| Specialist Outpatient Clinic Attendances | | | | | 438,547 |
| Accident & Emergency Attendances | | | | | 143,787 |
| Dental Attendances | | | | | 3,880 |
| Dental Procedures | | | | | 4,687 |

| | |
|---|--|
|  Sengkang General Hospital | 110 Sengkang East Way, Singapore 544886 Tel: 6930 6000 www.sengkanghealth.com.sg |
|---|--|

| Medical | Dental | Nursing | Allied Health | Others | TOTAL |
|--|--------|---------|---------------|--------|--------|
| 189 | 2 | 898 | 398 | 657 | 2,144 |
| Size | | | | | |
| Beds | | | | | 191 |
| Workload per annum | | | | | |
| Bed Occupancy Rate | | | | | 53.1% |
| Inpatients | | | | | 7,001 |
| Total Patient Days | | | | | 45,829 |
| Average Length of Stay (days) | | | | | 6.5 |
| Day Surgeries | | | | | 2,155 |
| Inpatient Surgeries | | | | | 2,247 |
| Specialist Outpatient Clinic Attendances | | | | | 22,264 |
| Accident & Emergency Attendances | | | | | 15,581 |
| Dental Attendances | | | | | 685 |
| Dental Procedures | | | | | 2,975 |

| | |
|---|--|
|  KK Women's and Children's Hospital | 100 Bukit Timah Road, Singapore 229899 Tel: 6225 5554 www.kkh.com.sg |
|---|--|

| Medical | Dental | Nursing | Allied Health | Others | TOTAL |
|--|--------|---------|---------------|--------|---------|
| 706 | 13 | 1,942 | 903 | 1,351 | 4,914 |
| Size | | | | | |
| Beds | | | | | 848 |
| Workload per annum | | | | | |
| Bed Occupancy Rate | | | | | 80.4% |
| Inpatients | | | | | 73,469 |
| Total Patient Days | | | | | 217,172 |
| Average Length of Stay (days) | | | | | 3.0 |
| Day Surgeries | | | | | 11,932 |
| Inpatient Surgeries | | | | | 19,802 |
| Specialist Outpatient Clinic Attendances | | | | | 565,564 |
| Accident & Emergency Attendances | | | | | 163,107 |

| | |
|--|--|
|  National Cancer Centre Singapore | 11 Hospital Drive, Singapore 169610 Tel: 6436 8000 www.nccs.com.sg |
|--|--|

| Medical | Dental | Nursing | Allied Health | Others | TOTAL |
|--|--------|---------|---------------|--------|---------|
| 161 | 0 | 167 | 399 | 365 | 1,092 |
| Workload per annum | | | | | |
| Day Surgeries | | | | | 8,840 |
| Specialist Outpatient Clinic Attendances | | | | | 154,173 |

| | |
|--|---|
|  National Dental Centre Singapore | 5 Second Hospital Avenue, Singapore 168938 Tel: 6324 8802 www.ndcs.com.sg |
|--|---|

| Medical | Dental | Nursing | Allied Health | Others | TOTAL |
|--------------------|--------|---------|---------------|--------|---------|
| 0 | 141 | 18 | 67 | 287 | 513 |
| Workload per annum | | | | | |
| Day Surgeries | | | | | 9,107 |
| Dental Attendances | | | | | 202,395 |
| Dental Procedures | | | | | 200,373 |

| | |
|---|---|
|  National Heart Centre Singapore | 5 Hospital Drive, Singapore 169609 Tel: 6704 8000 www.nhcs.com.sg |
|---|---|

| Medical | Dental | Nursing | Allied Health | Others | TOTAL |
|--|--------|---------|---------------|--------|---------|
| 123 | 0 | 503 | 318 | 385 | 1,328 |
| Size | | | | | |
| Beds | | | | | 185 |
| Workload per annum | | | | | |
| Bed Occupancy Rate | | | | | 78.8% |
| Inpatients | | | | | 10,459 |
| Total Patient Days | | | | | 52,891 |
| Average Length of Stay (days) | | | | | 5.1 |
| Day Surgeries | | | | | 2,244 |
| Inpatient Surgeries | | | | | 6,379 |
| Specialist Outpatient Clinic Attendances | | | | | 128,417 |

| | |
|--|--|
|  National Neuroscience Institute | 11 Jalan Tan Tock Seng, Singapore 308433 Tel: 6357 7153 www.nni.com.sg |
|--|--|

| Medical | Dental | Nursing | Allied Health | Others | TOTAL |
|--|--------|---------|---------------|--------|--------|
| 105 | 0 | 38 | 141 | 130 | 414 |
| Workload per annum | | | | | |
| Specialist Outpatient Clinic Attendances | | | | | 48,373 |

| | |
|---|---|
|  Singapore National Eye Centre | 11 Third Hospital Drive, Singapore 169751 Tel: 6227 7255 www.snecc.com.sg |
|---|---|

| Medical | Dental | Nursing | Allied Health | Others | TOTAL |
|--|--------|---------|---------------|--------|---------|
| 124 | 0 | 289 | 146 | 350 | 910 |
| Workload per annum | | | | | |
| Day Surgeries | | | | | 43,397 |
| Specialist Outpatient Clinic Attendances | | | | | 343,696 |

| | |
|--|--|
|  SingHealth Community Hospitals | 1 Anchorvale Street, Singapore 544835 Tel: 6930 6000 www.singhealthch.com.sg |
|--|--|

| Medical | Dental | Nursing | Allied Health | Others | TOTAL |
|---------|--------|---------|---------------|--------|-------|
| 4 | 0 | 31 | 14 | 47 | 96 |

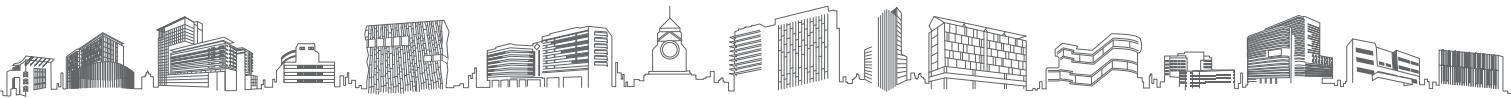
| | |
|--|---|
|  Bright Vision Hospital | 5 Lorong Napiri, Singapore 547530 Tel: 6248 5755 www.bvh.com.sg |
|--|---|

| Medical | Dental | Nursing | Allied Health | Others | TOTAL |
|--------------------|--------|---------|---------------|--------|--------|
| 12 | 0 | 203 | 48 | 199 | 462 |
| Size | | | | | |
| Beds | | | | | 241 |
| Workload per annum | | | | | |
| Bed Occupancy Rate | | | | | 87% |
| Inpatients | | | | | 1,722 |
| Total Patient Days | | | | | 76,549 |

| | |
|---|--|
|  Polyclinics SingHealth | 167 Jalan Bukit Merah, Tower 5, #15-10, Singapore 150167 Tel: 6236 4800 polyclinic.singhealth.com.sg |
|---|--|

| Medical | Dental | Nursing | Allied Health | Others | TOTAL |
|------------------------|--------|---------|---------------|--------|-----------|
| 186 | 20 | 269 | 178 | 460 | 1,112 |
| Workload per annum | | | | | |
| Polyclinic Attendances | | | | | 1,819,465 |
| Dental Attendances | | | | | 43,783 |
| Dental Procedures | | | | | 115,468 |

About Us



The SingHealth Duke-NUS Academic Medical Centre draws on the collective strengths of Singapore Health Services (SingHealth) and Duke-NUS Medical School to drive the transformation of healthcare and provide affordable, accessible and quality healthcare.

With over 40 clinical specialties, a network of acute hospitals, national specialty centres, polyclinics and community hospitals, we deliver comprehensive, multidisciplinary and integrated care.

Members of the SingHealth Group

Tertiary Specialty Care

Hospitals: Singapore General Hospital, Changi General Hospital, KK Women's and Children's Hospital, Sengkang General Hospital

National Specialty Centres: National Cancer Centre Singapore, National Dental Centre Singapore, National Heart Centre Singapore, National Neuroscience Institute, Singapore National Eye Centre

Primary Care

SingHealth Polyclinics: Bedok, Bukit Merah, Marine Parade, Outram, Pasir Ris, Punggol, Sengkang, Tampines

Intermediate and Long-term Care

SingHealth Community Hospitals: Bright Vision Hospital, Sengkang Community Hospital, Outram Community Hospital (expected completion: 2020)

Our Vision

Defining Tomorrow's Medicine

Our Mission

Care to Heal. Educate to Empower. Innovate to Advance.

Our Common Purpose

PATIENTS. AT THE HEART OF ALL WE DO.®

Our Core Values

Compassion. Integrity. Collaboration.

Our Partner in Academic Medicine

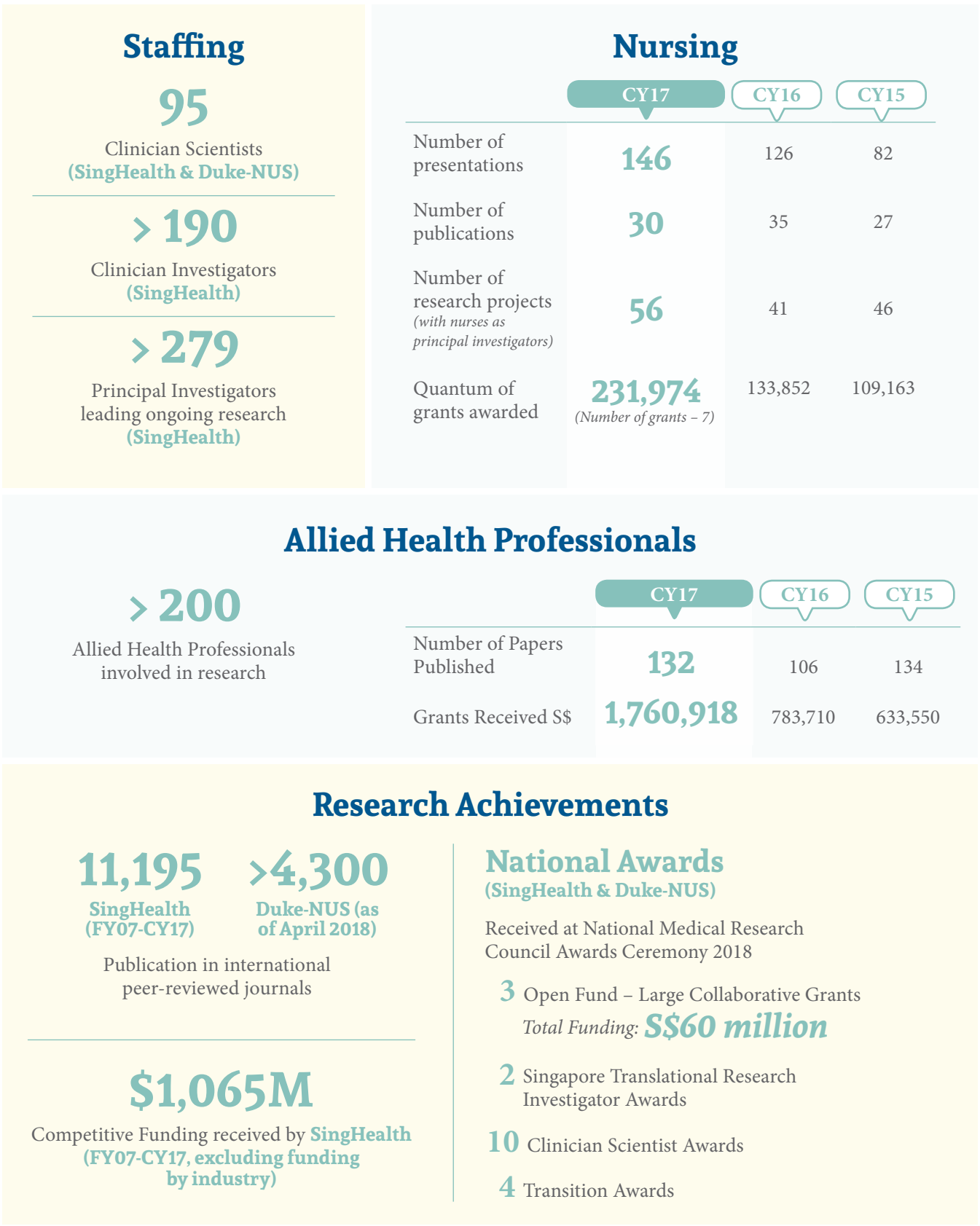


Duke-NUS is a partnership between Duke University School of Medicine and the National University of Singapore (NUS).

In 2005, with support from the Singapore government, NUS and Duke University, two academic institutions with strong track records in research and education, committed to combine the unique medical education curriculum at Duke University School of Medicine with the academic rigour and rich resources offered by NUS, and to offer students an enriching and innovative medical educational experience.

Duke-NUS is located on the main campus of the largest healthcare group in the country, Singapore Health Services (SingHealth). This group collectively delivers multi-disciplinary care among more than 40 clinical specialties across a large network of hospitals, national specialty centres and polyclinics. Together, Duke-NUS and SingHealth constitute a leading, world class Academic Medical Centre embodying the goal of delivering the highest levels of patient care, education and research.

Research Statistics



Education Statistics



Numbers are based on FY17 (year ended 31 March 2018) unless stated otherwise.